



Leigh Delamere, Chippenham  
Chippenham, SN14 6JY





The East Wing The Almshouses Leigh  
Delamere, Chippenham, Wiltshire,  
SN14 6JY

- TO LET
- LOVELY PROPERTY
- SEMI RURAL LOCATION
- VERY WELL PRESENTED
- TWO DOUBLE BEDROOMS
- OFF STREET PARKING
- UNFURNISHED
- AVAILABLE EARLY JULY 2021

£850 PCM





Making up part of a wonderful period property, The East Wing is presented in first class order whilst retaining original features with two double bedrooms and off street parking. There is a small patio seating area by the front door (please note that the seating area is not enclosed). Available early July 2021, unfurnished, £850pcm + £75pcm for oil and water (sorry no pets and the property is not deemed suitable for children).

### Description

Situated in the village of Leigh Delamere the property is accessed via a private gravel drive. Accommodation comprises entrance, a bespoke fitted kitchen/breakfast room together with oven and hob whilst enjoying stone mullion windows, ornamental feature fireplace and a dual aspect.

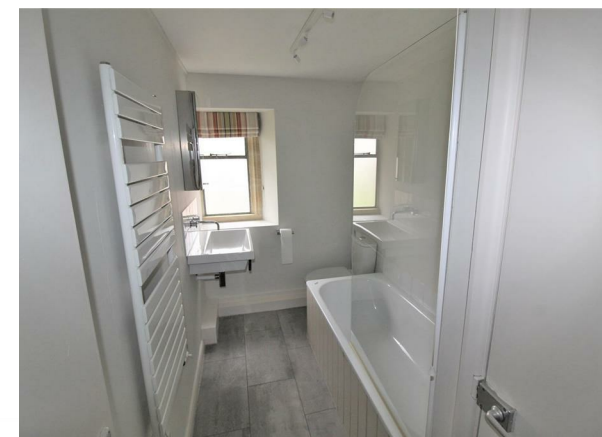
The spacious living room is accessed off the kitchen with useable feature fireplace whilst also enjoying a dual aspect and stone mullion windows.

Situated to the first floor are two double bedrooms and a contemporary bathroom with shower over, heated towel rail and airing cupboard. Bedroom one benefits from having a fitted wardrobe, storage cupboard and ornamental feature fireplace. Bedroom two enjoys dual aspect.

Further benefits include oil fired underfloor heating to the ground floor and externally there is parking for two cars and a small non enclosed patio area for sitting outside.

The property provides excellent access to the M4-Junction 17 whilst being on the doorstep of surrounding countryside.

A minimum contract for this property is 6 months. (Please bring passport OR driving licence & birth certificate with you at time of viewing).



■ Chippenham

■ Corsham

■ Devizes

■ Malmesbury

■ Auctions

■ Lettings

■ New Homes

■ Professional Dept

**[www.strakers.co.uk](http://www.strakers.co.uk)**

Email: [lettings@strakers.co.uk](mailto:lettings@strakers.co.uk)

Tel: 01249 652717

The East Wing The Almshouses Leigh Delamere, Chippenham, Wiltshire, SN14 6JY